

Banstead Village May Fayre

29th April 2023



IN SUPPORT OF



Procession starts 11.30am



WA TRUELOVE & SON LTD

INDEPENDENT FAMILY FUNERAL DIRECTORS
& MONUMENTAL CRAFTSMEN SINCE 1885

*As sponsors of The May Queen's carriage
we would like to wish the
Banstead Village May Fayre every success*

Simon & David Truelove are proud to be the fourth generation of their family to provide their funeral services to the families they serve.



Serving the local community

- 24 hour call out service
- Home visits available
- Jaguar fleet
- Horse-drawn funerals
- Monumental masonry
- Pre-paid funeral plans
- International repatriation
- Chapels of rest at all branches

For details of Truelove Pre-Paid funeral plans
Call FREE ON **0800 074 3797**



BANSTEAD 01737 212160

121 High Street SM7 2NS
banstead@watltd.co.uk

Also in: Ashted • Caterham • Cheam • Coulsdon • Dorking
Epsom • Fetcham • Leatherhead • Mitcham • Morden
Motspur Park • Reigate • Sutton • Wallington • Worcester Park

For more details scan this QR code or visit our website
www.watltd.co.uk or email us info@watltd.co.uk



SAUNDERS

ESTABLISHED 1997

INSIGHTFUL LOCAL KNOWLEDGE

Accurate valuations.
Outstanding expert advice.
Renowned customer service.
That's Saunders.

BANSTEAD
01737 363333
banstead@richardsaunders.co.uk

LETTINGS
01737 370700
lettings@richardsaunders.co.uk

RICHARDSAUNDERS.CO.UK

May Fayre Contents 2023

May Queen Background History	6
A Message from the May Fayre President	7
Money Raised through the years	10
May Queen 2023	11
Please join the May Fayre Group – volunteers needed	11
An invitation to the May Fayre 2023	14
Money raised for The Royal British Legion 2022	14
May Fayre Group Children and Committee Members	15
The Beacon School & Beacon Friends Association	18-21
Thank You from this year's Chair	22-23
Banstead Infant School Dancers	28
St Anne's Catholic School Dancers	28
Our Supporters	31
Join the May Queen Group	32
Attractions & Stalls in the Orchard	38
Food Court	39
Poster competition	42
Reigate & Banstead Volunteer Award	44
Order of Parade and Display Order of Events	47
Shop Window Dressing	52
Spot Yourself in the Crowd Competition	56-57
Raffle information and prize donors	60-61

Estate Agents and Property Services

Richard Saunders	3
The Personal Agent	5
Christies	8-9
Williams Harlow	13
ST Walsh LLP	46
Ralph James & Lancasters	48
Winkworth	55

Financial & Legal Services

Cuff & Gough	24
Surrey & City Mortgages	41

Health & Beauty

Surrey Opticians	30
Banstead Dental Care	53
Charlie Brown	65

Local Shops

Robert Fuller	26
Campbells Jewellers	50
Banstead Kitchen Studio	54
Mr Snob	64

Other Services

Truelove Funeral Directors	2
Signature	25
Banstead Classic Cars	29
Banstead Manor	36

CJ Nimmo Ltd (Drone Filming)	37
Lawton Print Design Ltd	43
Cleankill	40
Banstead Boilers	46
Hidden Gems Theatre School	49
Tadworth Charity Recycling	49
Birchgrove Banstead Place	51
Ciao Italia	62
Laird Academy	63
Romans International	66
Kriek & Gibson Veterinary Surgery	67
Fadi – The Village Tailor	68

Schools

Aberdour School	12
Banstead Preparatory School	16
Chinthurst School	33
Sutton High School	34-35

Sports & Leisure

Colin Bull Swimming	13
Surrey Swim School	17
Sutton and Epsom Rugby Football	27
Colin Bull Adult Swimming	45
Banstead Cricket Beer Fest – Banfest	58
Banstead Cricket Club	59

The
PERSONAL
Agent

According to Rightmove, we're Epsom's
No.1 Letting Agent
with more new instructions and agreed lets!



Simply scan the QR code to visit our website and read why our customers keep coming back!



We are the leading local lettings agent on Rightmove in Epsom for the whole of 2022

Not only do we take on the most properties, we let the most out too and have the highest amount of available stock.

Our team has over 40 years combined experience as specialists in lettings and property management

...so if you are looking for help with property management or letting, give us a call...

Epsom 01372 726 666
Banstead 01737 333 699

But if you are looking to sell your property, give our award winning sales team a call on
01737 333 699

With four local computer linked offices, we have your area covered.

We offer exceptional local knowledge, accurate valuations and a different approach to estate agency that you will find refreshing!

Rightmove data for 2022



To find out more visit www.thepersonalagent.co.uk
email lettings@thepersonalagent.co.uk or banstead@thepersonalagent.co.uk

Background History Banstead Village May Queen 1985 - 2023

Throughout history people have celebrated the coming of summer in May with different customs that express joy and hope after a long winter. Rural English villages have traditionally marked this time of year when warmer weather begins and flowers and trees start to blossom with festivals incorporating May Pole dancing and crowning a May Queen to symbolise the brighter more productive months ahead.

The current Banstead May Queen Group was originally started in 1985 by a dynamic local resident Pat Bryant. She gathered together a group of parents to form a committee to organise an annual event and raise some money, for the local community. Pat felt that a village as old as Banstead which dates back to doomsday would probably have had a May Festival with a May Queen. Pat and her committee could not have realised how popular this would become and how long the group would be sustained.

Each May Queen Group has their own identity shown by the colours they wear. In Banstead the colours chosen by Pat were pink and white to represent the local blossom tress and mint green as Banstead was renowned for its mint. One of the committee members, Mrs Roz Barham, made the original May Queen Attendants dresses and the May Queen's Cape. Another parent, Carol Fullerlove, taught the children at St Anne's School how to dance around a May Pole and this tradition still continues today.

The first May Queen was Victoria Searchfield (*pictured below*) just after being crowned by the Rev Tom New. That initial Fayre raised £34.35 for the Brownies. Over the last thirty five years the May Fayre has grown and developed into a major annual event for the village. We have tried to keep local families and the community as the central focus for our day. As a consequence of the Fayre, we hope to raise awareness and financially benefit a charitable cause. We have been overwhelmed by the generosity of all who attend the Fayre and as a result we have been able to support a wide variety of local charities and have donated a total of £175,000 during this time. This is a remarkable achievement for a group of mums and dads with little experience, who work together to give Banstead a truly memorable day and support a local charity.

The current committee would like to thank all our sponsors and helpers over the years. We are very grateful for your continued support which enables us to run this event. We had to cancel the last two Fayres thanks to the pandemic, but now we are back - bigger and better than ever!



Message from the May Fayre President – Mel French

This year's May Queen is Georgia, and her chosen Charity is the Beacon Friends Association, which is the charity which supports the Beacon School, Banstead.

Their purpose is to enhance the life experiences of every student at the Beacon School. The BFA achieves this in 2 ways: By developing effective relationships between staff, students, parents, carers and others associated with the school. By engaging in activities or providing facilities or equipment which support the school and enhance the education of students.

Banstead County Secondary School - now The Beacon School - in Picquets Way was opened on 17 February 1936. The first school in the district for children between the ages of 11 and 14, it was built on land that was formerly part of the Nork Estate, founded by Sir Christopher Buckle in the 18th century.

I have been part of the May Queen group since 2008, in various forms. My daughters were May Queens in 2013 and 2015, so I have been May Queen mum twice, and vice chair twice. I took over as President from the lovely Karen Walsh in late 2018. We have been going for nearly 40 years now, which is absolutely amazing and worth celebrating.

Lastly, I just wanted to say a big thank you to all the girls and boys of the May Fayre Group for being part of this day, and hope that you have some special memories of the day. Thank you to all the local businesses who, year after year, continue to give us their support for which we are very grateful.





CHRISTIES

*We're poles apart
from others...*



Google

Reviews ★★★★★

★★★★★

"I can't praise them enough
and I would definitely
recommend them if you are
looking to buy or sell"

Tony Morton

★★★★★

"We received an excellent
service from Christies in
selling our house from
start to finish"

Jane Cook

★★★★★

"Christies are a lovely
team, very helpful
and friendly and
professional"

A Taylor



CENTRO

Selling & Letting Homes



To arrange a speedy complimentary market
appraisal and discuss the advantage of our
special offers call our team on

01737 307 000

58 – 60 High Street | Banstead | SM7 2LX
www.christiespropertyworld.com

Money Raised through the Years

Banstead Village has held an annual May Fayre Day for the last 35 years. Thank you to the advertisers, sponsors, participants, children, families and attendees supporting this day. An amazing £175,000 has been raised and donated to various charities over the past 35 years. Well done, Banstead for this fantastic effort. We hope that this tradition of combining a fun day whilst raising money for charity continues for many more years to come.

1985	Victoria Searchfield	Brownie Hall	£34.35
1986	Nicola Brind	Royal Marsden	£58.92
1987	Nicola Fullerlove	Banstead Place	£134.12
1988	Suzanne Taylor	Open Door Appeal	£328.19
1989	Sarah Gilbert	Tadworth Court	£327.33
1990	Hannah Wingrave	E.E.T.F Special Care Baby Unit	£400.62
1991	Helen Barnham	Malcolm Sergeant Cancer Fund	£495.00
1992	Catrina Howell	Barnardo's	£495.00
1993	Melissa Barham	Childline	£1,485.53
1994	Caroline Chapman	Rainbow Trust	£644.14
1995	Imogen Barham	Riding for the Disabled	£820.00
1996	Katy Turner	Friends of Epsom General Hospital	£1,000.00
1997	Emma Coley	Royal Marsden	£1,425.00
1998	Victoria Bishop	Children's Trust	£2,600.00
1999	Harriet Norman	Perth's Disease	£2,600.00
2000	Sarah Fraser Osman	The Woolfson Children's Cancer Unit	£2,590.00
2001	Annabel Parsk	Sutton Salvation Army	£3,950.00
2002	Francesca Skelt	MERU	£4,350.00
2003	Sarah Walsh	Macmillan	£6,120.00
2004	Lucinda Parsk	Salvation Army & Alzheimer's Society	£9,961.00
2005	Lauren Staddon	Chase - Children Hospice	£9,500.00
2006	Kristen Staddon	Chase - Children Hospice	£10,343.00
2007	Christianne Parsk	Mid Surrey Alzheimer's Society	£10,600.00
2008	Meera Rajasooriar	Age Concern & Guide Hut	£6,435.00
2009	Lydia Rose Mills	Royal Marsden (Teenage Unit)	£7,556.36
2010	Jessica Diges	C.R.Y (Cardiac Risk in the Young)	£6,586.58
2011	Emma Neil-Jones	Princess Alice Hospice	£9,500.00
2012	Amber-Jade & Holly Standish	Children's Trust & Guide Hut	£4,160.00
2013	Francesca Warren	Banstead YMCA	£7,800.00
2014	Bethany Davies	Great Ormond Street Hospital	£10,000.00
2015	Natasha Warren	Banstead YMCA	£8,000.00
2016	Olivia & Isabelle Allison	The Royal Marsden Cancer Charity	£8,115.00
2017	Megan & Kathryn Maloney	RETT UK	£11,000.00
2018	Ruby Doohan	Children's Trust	£13,000.00
2019	Amelie Clarke, Lauren & Sophie Lees	Breck Foundation	£8,500.00
2022	Sonia Patel	Royal British Legion	£11,000.00

May Queen
2023

Georgia May Trayfoot



Georgia is a creative young girl who enjoys attending school at St Anne's, she is in year 4 .

Georgia loves Gymnastics and Irish Dancing, which she will be performing at the Fayre.



**VOLUNTEERS
NEEDED**

JOIN THE GROUP

The Banstead May Fayre is a great day for the community to get together and join in all the fun, from the parade to the stalls and seeing the entertainment.

But the group that organises this great event is running low on volunteers and would like your help. Can you spare a few hours a month and join in on the day of the Fayre?

BENEFITS

The Banstead May Fayre has been running since 1985 and brings all the community together for great charities.

We couldn't do it without the community and the support of the High Street shops, but we need the group to survive in order for the Fayre to survive.

GET IN TOUCH

bvmqg.newmembers@gmail.com or
07754 981 193

Aberdour floret qui laborat

Independent day school for boys and girls aged 2-11 years



Little Learners at Aberdour

Wonder, Inspire & Discover
Open for Private Tours - Enquire Today

01737 354119 / registrar@aberdourschool.co.uk

Brighton Road, Burgh Heath, Surrey KT20 6AJ

www.aberdourschool.co.uk

**WILLIAMS
HARLOW**

Proud sponsors of the
Banstead May Queen Fayre since 2009 -
this year in support of the
The Beacon Friends Association

01737 370022
williamsharlow.co.uk

**INDEPENDENT ESTATE AGENTS TO
BANSTEAD AND CHEAM
FOR OVER 30 YEARS**



SWIMMING LESSONS QUALITY LESSONS FOR ALL AGES



colin@cbswimming.co.uk
www.colin-bull-swimming-lessons.co.uk
www.facebook.co.uk/cbswimming



**Downsend School
(Leatherhead)
and Epsom College**

- Qualified, experienced instructors
- Evenings and weekends
- Helpers in the water
- Small groups with excellent results
- Adult classes, all abilities
- Aged 4 & above without parent
- Aged 2½ and above with parent



COME AND TRY A CLASS 'FREE'
Ring Colin today. You'll never go anywhere else!

01372 739600

The Banstead Village May Fayre Group
proudly invites you to our May Fayre.

Procession starts at 11.30am from the United Reformed Church
Woodmansterne Lane, proceeds along the High Street up to the
roundabout at Zizzi's and then back into the Orchard of All Saints' Church.

Georgia May Trayfoot

will be crowned Banstead May Queen at Midday.

The Fayre will then be opened by

The Deputy Lord Lieutenant Brigadier Paul Evans, OBE DL,
County President for The Royal British Legion, Surrey.
Also in attendance will be The Mayor of Reigate and Banstead,
Councillor Frank Kelly

For the safety of everyone involved in the parade and for those watching
there will be a rolling road closure of Banstead High Street while the parade passes.
The buses will be temporarily delayed. We are sorry for any inconvenience caused.

The Royal British Legion Banstead Branch were delighted and honored to have been the chosen charity for The May Queen parade in 2022. What a parade it was with hundreds taking part and thousands watching. My members were extremely proud to be involved in this event, not only on the day, but in the buildup and planning to this very well-run event and showed what can be achieved when two groups come together in a partnership. The President of The Royal British Legion in Surrey Brigadier Evans led the parade which was extremely fitting, and I know he felt extremely proud to do so.

We also graciously accepted a cheque for £11,000 which was an amazing amount thank you, This meant we were able to contribute a total of £53,000 to last years poppy appeal and made us the highest contributor in Surrey.



We wish you every success in
this years May Queen event,
thank you to everyone who
has supported our appeal
over the years and best
wishes to the Beacon School
who follow us as this year's
chosen charity.

Mike Sawyer

Chairman

RBL Banstead and
District Branch



May Queen

Georgia May Trayfoot ~ 9



Stomie Clark ~ 9

Evelyn Cruse ~ 9

Angelina Jones ~ 8

Elitheia Cruse ~ 7

Ava Seymour ~ 5

Mila Braghittoni ~ 5

Dollie Trayfoot ~ 5

Fleur Donovan ~ 5

Evie Donovan ~ 5

Mila Braghittoni ~ 5

Erin O'Connor ~ 5

Charlotte Simms ~ 4

Lyla McCarry ~ 4

Evie McCary ~ 4

The Banstead Village May Fayre Group Committee

Mel French

Official Event Videographer - Matthew Young, Corrupted Crystal Productions

Official Event Photographer - Natasha Warren

Official Event Drone Pilot - Oliver Nimmo, Cjnimmo Drone Division

Programme artwork and printing - Lawton Print Design Ltd • www.lawton-pd.co.uk

All comments, suggestions and donations are welcomed.

If you would like to join the group, please contact BVMQG.newmembers@gmail.com

FREE TO BE ME



I am smart, funny, brave, kind, curious, unique, creative, energetic, honest, fearless, caring, surprising, determined, playful, musical and a loyal friend.

And that's just today.

I'm free to be wonderfully and wholeheartedly me.

Join us for our open morning on **Thursday 11 May 2023.**

Visit www.bansteadprep.com to book your place.

 [instagram.com/bansteadprep](https://www.instagram.com/bansteadprep)

 [facebook.com/bansteadprep](https://www.facebook.com/bansteadprep)

 twitter.com/BansteadPrep

A multi-activity holiday camp for all children aged 3 to 12*.

For more information and for our opening dates and times, visit our website.

specific weeks only*



AT BANSTEAD PREP

thezonebanstead.co.uk



Come and join our friendly, safe, structured swimming lessons and learn a life-saving skill

- ❑ Experienced in teaching babies to adults
- ❑ Small, friendly groups
- ❑ One-to-one classes
- ❑ Qualified instructors with appropriate rescue qualifications - all DBS checked
- ❑ Lessons follow the Swim England Learn to Swim Programme
- ❑ Personalised swim fitness plans
- ❑ Teaching venues at Banstead Prep, Banstead and St. John's School, Leatherhead

SWIMMING - THE FUN WAY TO FITNESS



Tel: 01737 211160

Mob: 07827 333510

Email: info@surreyswimschool.co.uk

Web: www.surreyswimschool.co.uk



The Beacon School
Excellence : Respect



The Beacon School is a mixed academy school for students aged 11-18 years old. The school is situated in Banstead, Surrey and is a member of the GLF trust. The school is on an exciting journey of improvement and will be relentless in its aim of providing students with the best educational experience possible. We strive to ensure students can fulfil their potential and grow into happy, kind and well-rounded individuals. We aim for students to develop their resourcefulness, resilience, accept responsibility and be challenged to take risks in order to learn and succeed.



We want all of our students to achieve the best possible qualifications, so that many doors are open to them in the future. Students last summer achieved the school's best exam grades in its history and we are proud of everything they achieved. Academic achievement is important to school. Equally, we are also committed to our students gaining key skills that prepare them for life in the 21st century and for them to become passionate about life-long learning beyond the classroom.



GLF Schools, core values of Respect, Inclusivity, Integrity and Kindness

Students are encouraged to join one of the many extra-curricular clubs on offer, as well as being part of the House competitions.

We have high expectations of each other and recognise that everyone learns differently. We expect our students to work hard and behave well both inside and outside of the classroom. Our values of 'Excellence' and 'Respect' are at the core of everything we do and we will continually look for ways to improve each day.

We have high ambitions for our students and believe they only have one chance at school. We believe it is our job to work together as staff and parents to support, motivate, guide and challenge each one of them in order for them to become the best they possibly can be.

We trust that the ambitions that we hold for our students are shared by all within our community. We are fortunate to draw upon the support of our Multi Academy Trust, GLF Schools, whose own core values of Respect, Inclusivity, Integrity and Kindness align with our own philosophy. Our most important partners, however, are our parents and carers. We are determined to work in genuine partnership with families to ensure the success of all our students.



Our values of 'Excellence' and 'Respect'





"To enhance the life experiences of every student at The Beacon School"



At The Beacon School, curriculum embraces everything that we do. We provide a broad and balanced offer at all our Key Stages; a comprehensive Next Steps and Careers programme; an extensive offer of PSHE and Active Tutorials; high quality RS education and programme of collective worship; a sports field; a whole school production; excellence in Art, Drama and Music extra curricular provision; a Scholars Programme and a large Duke of Edinburgh programme.

The curriculum also has an impact upon student development as they travel out on our plethora of local, national and foreign trips including our global expedition.

The breadth of experience over the three years of Key Stage 3 provides a solid foundation for students to move into the two year GCSE. It aims to prepare our young people fully for life and study at Key Stage 4 – and beyond

– by providing a comprehensive and challenging curriculum, building knowledge and skills through passionate and responsive teaching based firmly on Rosenshine's principles for instruction. There are a range of enriching opportunities both within school and the wider community.

Everyday is an open day at The Beacon School. Please come and visit us and take the opportunity to talk our staff and most importantly our students who are great ambassadors and will explain what life is like at our school.

The Beacon Friends Association (BFA) achieves this in 2 ways:

1. By developing effective relationships between staff, students, parents, carers and others associated with the school
2. By engaging in activities or providing facilities or equipment which support the school and enhance the education of students.

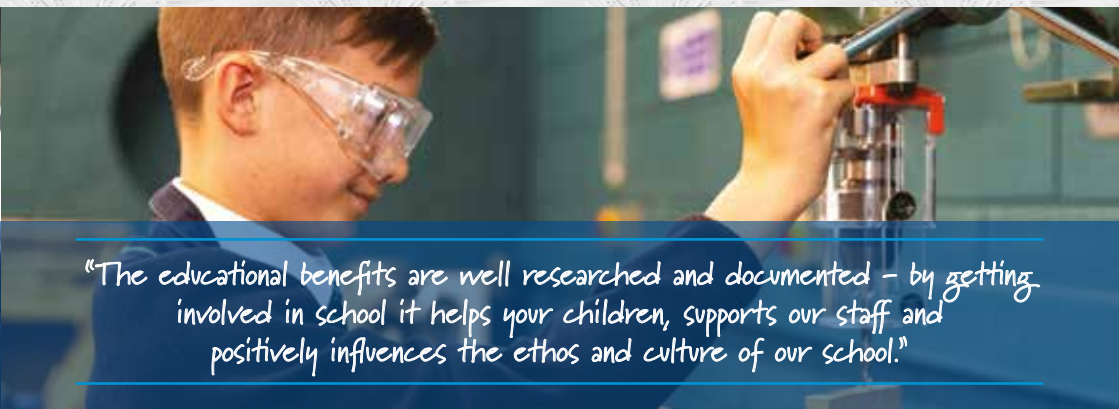
The BFA is a unique model that has a far wider remit than the traditional PTA and a defined strategy that runs alongside the strategic aims of the school. We have a modern 'no committee' structure for parents/carers and friends of the BFA to buy into, with a wide variety of areas of interest to get involved with, without the constraints of meetings to attend. It is easy to make a difference without ever baking a cake.

The BFA is a new way of doing things at The Beacon School: it is a new approach with our whole school community at the heart of what we do. This is why our motto is 'bringing home, school and our community together'.

Everyone – parents, carers, staff – becomes a member of the BFA when they join the school. All existing parents and carers are automatically members, as well as existing teaching and support staff.

When your child joins The Beacon School, you do too. We are working with you from the very first day.

When you join as a staff member, you join a supportive community of other staff members, parents and carers with a shared vision to advance the education of our children and young adults.



"The educational benefits are well researched and documented – by getting involved in school it helps your children, supports our staff and positively influences the ethos and culture of our school."

A thank you from the 2023 Banstead Village May Fayre Group

To all the family and friends of the members of the May Fayre Group past and present who have helped in countless ways throughout the planning stages and on the day – we are incredibly grateful and wouldn't be able to run the event without you.

- A big thank you to Karen Walsh for once again volunteering to help out on the day (our previous President) who is always available for Pizza and chats!
- To the Deputy Lord Lieutenant, Brigadier Paul Evans OBE, DL. (County President for RBL Surrey) for attending and speaking. He loved it so much last years he has come back again!
- To the Worshipful Mayor of Reigate & Banstead, Councillor Frank Kelly for attending and opening the Fayre.
- To Reverend Phil Maudsley, the Vicar of All Saints Church, for the use of The Orchard and for kindly welcoming everyone to the Fayre.
- To Helyn Clack, Chair of Surrey County Council for attending for the first time.
- To the Members of Banstead Royal British Legion, especially Mike Sawyer, Tim Snuggs, Richard Mantle, Allan Parsons and apologies for the endless texts, emails. You are still helping me out this year, even though you are the outgoing Charity.
- To the Members of the Beacon Friends Association for working with me to put this day on, - James Grant - Duff, Gayle Rennie, Emma Morris, Mandy Rowbottom, George Dixon, Harvey Morris
- To Stuart Aires, from Banstead Boilers, for his endless enthusiasm re setting up and organising the Banstead Classic Car Group re the Parade and for Karrene Arnold from the Banstead Today Facebook Group for all her promoting of our event.
- To all the volunteers who have helped to set up the Fayre and run our stalls, and to the Road Stewards who allow the parade to run safely. We know that stewarding isn't a fun job, and we are very grateful you are willing to do it!
- To all the Mums and Dads of the children parading as part of the May Fayre Group – we are delighted your children are taking part, and that you are willing to help us with set up and on the day.
- To Mary Staddon (a 2005 & 2006 May Fayre mum) for all the delicious cakes you have provided with over the years for our cake stall, all at your own expense.
- To Barry Alston from Radio Marsden for being our MC again this year. You are such an enthusiastic and important part of our day, and we are incredibly grateful that you are willing to come back year on year.
- To Liz and her team from The Open Door for providing refreshments for all the volunteers from early in the morning, and to those attending the Fayre throughout the day.
- To the ladies of the Mother's Union for all your continued support over the years.
- To the All-Saints' Church Bell Ringers for heralding the start of the Fayre so beautifully.
- To the URC, for allowing us use of your foyer and carpark once more for the initial gathering of the procession, Banstead Community Centre for letting the Band Members park before the Parade, to Reigate and Banstead Council for providing free parking in Banstead Pay and Display Car Park.



- To all the incredibly generous local businesses who provide sponsorship and resources to run May Fayre stalls, donate proceeds and fund match.
- To all the wonderful advertisers in this programme, especially those who return year on year. We are grateful for your continued support.
- To all the businesses in Banstead and beyond who have so generously donated raffle prizes.
- To all the local shops who have brightened our High Street and beautifully dressed their shop fronts for the Window Dressing Competition
- To all the children and teachers involved from Banstead Infants, St Anne's Catholic Primary, and The Beacon School for your wonderful performances on the day and all the hard work that is involved in the preparation, you should be very proud!
- To all the other groups and clubs that take part in the parade or perform throughout the afternoon to make the Fayre an enjoyable day. We all enjoy watching the wonderful talent!
- To all those children who entered the Poster Competition. You have produced some beautiful work, and this year we are also printing the two runners' up for each category in the programme.
- To Simon Truelove from WA Truelove for so kindly sponsoring the carriage and horses to transport the Queen and to Tony from Drewitt's for providing them. You have made our girls' day!
- To Fadi Village Tailors for Sponsoring the stage
- To Williams Harlow Estate Agents and Andrew Bull for your long running Sponsorship
- To Robert Fuller for your very kind Sponsorship that you have been giving us for decades
- To Geoff Potter for your long running Sponsorship
- To BVRA for your Sponsorship to help support Banstead Village
- To Nork Residents Association for your Sponsorship of the parking Fees
- To Waitrose for your Sponsorship
- To Asda for your Sponsorship
- To Papa Johns for your long running Sponsorship of the Pizza stall
- To Ison Media for rescuing the Website
- To Lancaster's Estate Agents for sponsoring and running the Prosecco Stall
- To Banstead Manor Care Home for your Sponsorship
- To Stuart Allen from Commercial Insurance Services Limited for your guidance once again.
- To Andy Lawton from Lawton Print Design for once again producing our programme and providing expertise, guidance and patience in the process. Apologies for all the stress we cause you!
- To the Banstead and Nork Residents' Associations, Banstead Business Guild, the Beacon School Friends Association for your support.
- To our Sponsors, who have helped us fund the Fayre, for the last 38 years. If we didn't have your support, we could not have carried on.
- To all the wonderful children who are parading this year as part of the May Fayre Group, or are in other groups
- And finally, to the Village of Banstead – thank you for coming out to join the celebrations, helping with the fund-raising, and making the day a success!

Thank you



Services:

- Wills and Probate
- Matrimonial and Family Law
- Residential Conveyancing
- Notary Public

Approachable, friendly and affordable
legal advice in the real world

Contact us:

tel: 01737 851827

fax: 01737 353274

email: law@cuffandgough.com

Cuff and Gough LLP Solicitors
Lamborn Place | 26 High Street | Banstead
Surrey | SM7 2LJ

www.cuffandgough.com



Flexible care for complete peace of mind

When it comes to care, many people start off by relying on friends and family or bringing in professionals to support them in their own homes - a gardener, a cleaner, someone to make sure the bills are paid or the weekly shopping is done. But managing this support can be a job in itself, taking up precious time.

At Signature, our flexible, person-centred approach to care is as individual as each of our residents. Whether your loved one needs regular medical attention, help with personal tasks like washing or dressing, or just a bit of support to help maintain independence for as long as possible, we'll take care of it, giving you peace of mind – and them the time to enjoy the finer things in life.

RESIDENTIAL | NURSING | DEMENTIA CARE | RESPITE



To find out more about how Signature at Banstead can provide total peace of mind for you and your loved ones, please contact Sue Martin, our Client Liaison Manager, today.

01737 924693 | enquiries.banstead@signaturesl.co.uk | signature-care-homes.co.uk



ROBERT FULLER

12-16 High Street Banstead SM7 2LJ

Tel: 01737 356789

EMAIL: INFO@ROBERT-FULLER.CO.UK

WWW.ROBERT-FULLER.CO.UK



AT ROBERT FULLER WE ARE CONTINUALLY MODIFYING OUR APPEARANCE AND PRODUCT OFFER TO SUIT THE NEEDS OF OUR CUSTOMERS CREATING A RELAXING AND TIMELESS ENVIRONMENT. IT IS OUR AIM TO PROVIDE THE BEST MERCHANDISE AVAILABLE AND CONTINUALLY OFFER THE BEST POSSIBLE SERVICE.

AT ROBERT FULLER WE HAVE BEEN WORKING WITH PREMIUM LUXURY BRANDS ACROSS BOTH FORMAL WEAR AND CASUAL WEAR FOR OVER THREE DECADES. WE ARE ALWAYS LOOKING TO IMPROVE OUR OFFER AS FASHION IS CONTINUALLY MOVING FORWARD IN AN EVER EVOLVING ENVIRONMENT.



RUGBY LANE

THE HOME OF SUTTON & EPSOM RFC

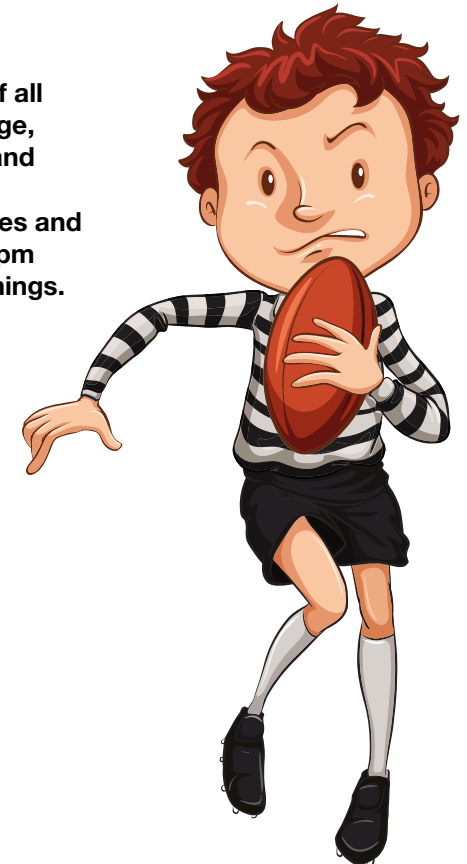
Your local club wants you!

Rugby for boys, girls, men and women of all ages and abilities. Learn to play at any age, improve your fitness, meet new friends and enjoy the camaraderie. Men train every Tuesday and Thursday from 7:00pm; ladies and juniors train every Wednesday from 7:30pm and minis train and play on Sunday mornings. Get down to Rugby Lane.

Sutton & Epsom RFC

Cuddington Court
Rugby Lane
Cheam
Surrey SM2 7NF
020 8642 0280

[@SuttonEpsomRFC](#)



Sutton & Epsom RFC
An amateur community rugby club

suttonrugby.co.uk



COUNTRY DANCING by Banstead Infant School



MAYPOLE DANCING by St Anne's Catholic Primary School



BANSTEAD CLASSIC CARS

A collection of classic cars and American cars 1910 to 1980



These are local area cars which we are delighted to get out of the garages to be part of the parade. We will be behind the parade where we will cruise the High Street and then take a loop along the A217. We will then be parked in the local car park in Banstead for you to take a close look.

We really hope you enjoy these beautiful cars and we are delighted to be part of the parade.





MARCCAIN Marc Cain Eyewear



optical fair

Saturday
13th May 2023

Save the date.

Join us for
exclusive on the
day deals!

Please join us between 09.00 -17.30hrs at:

Our Wallington Branch

116 Woodcote Road,

Wallington, SM6 0LY

To book an appointment please call:

020 8647 3644

To our Sponsors: Thank you for your generosity and support.
We would not be able to run the day without you.



Thank you for sponsoring
us with the Fruit



Thank you for your
sponsorship, which will help
pay for the Parking Suspension



Thank you
to Fadi for
sponsoring our
stage again



to Stuart for his
donation and for
organising the Classic
Cars to take part in
the Parade



Thank you to
Andrew Bull for
supporting us
yet another year
through advertising



Cuff & Gough LLP
Solicitors

Thank you to Jeremy Cuff and Debbie
Phillips along with Tina Parker for
sponsoring the event



for running the
Pimm's Tent



many thanks to
Stuart Allen for your
sponsorship and advice
over the years



Thank you to the team at
Waitrose for sponsoring
the event



for printing of letters
and posters



Thank you for
your help with the
website and social
media etc



Thank you to Richard
and Bill for your ongoing
sponsorship year after year



International Accountants Established in 1950

Thank you to Geoff and Judith
Potter for sponsoring the public
seating in the Food Court



Thank you to Simon Truelove for
sponsoring the carriage and horses
for the Queen



a hallmark care home
for sponsoring the
raffle printing costs



Thank you to the
team for donating
and cooking the
pizzas for us on the
day once again!



Thank you to Luke Martin-
Jones for supporting the May
Queen for 2023 including flyer
advertising and to your team for
enthusiastically agreeing to man
our Processo Cart!



Thank you for your sponsorship
which will help pay for the
Krispy Kreme's

Our Supporters



@BVMQG



Facebook



bansteadmayqueen



Would you like to join the May Queen Group

Come and join the Banstead Village May Queen Group and join in the fun!

The Banstead Village May Fayre is a wonderful English tradition, with a fantastic parade, followed by Maypole dancing, country dancing and all manner of entertainment. It has been running since 1985.

The Banstead Village May Queen Group is made up of about 20 local families. The May Queen is the child of one of the organising Group, as are her Prince and attendants, and all live in, or have strong ties to Banstead.

Each year, The Group organises The Banstead Village May Fayre on the Saturday of the May Bank Holiday weekend. The family of the May Queen decides on the charity supported during their reigning year.

We are looking for new members for our group and invite you to join us and help raise money to support charities. You may have a child or grandchild who would like to be included, or perhaps you are retired and would like to help at this important community event. Find out more about joining the Banstead Village May Queen Group with the contact details below.



bvmqg.newmembers@gmail.com
07754 981 193

CHINTHURST SCHOOL *Tadworth*

*A Junior School of Reigate
Grammar School*

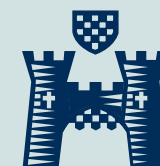
*Co-educational school
for children aged
2½–11 years*



WINNERS! *School of the Year for Sporting Achievement*

*"Chinthurst
finds the fun
in everything!"*
Year 2 pupil

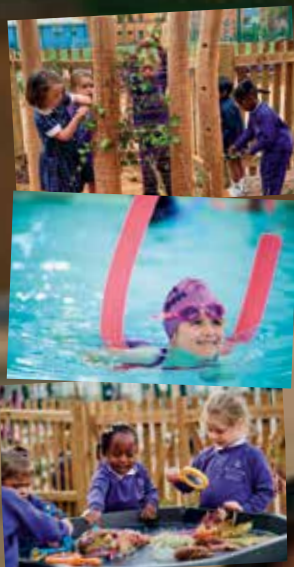
Visit us at www.chinthurstschool.co.uk
Chinthurst School, Tadworth Street,
Tadworth, Surrey KT20 5QZ



Fernwood House

Nursery and Reception

Brand
New Space!



- Forest School
- Weekly Swimming
- Qualified, specialist teachers
- Daily outdoor learning
- Dance, Music, PE, French
plus so much more!

PLAY | LEARN | EXPLORE

BOOK A PERSONAL TOUR

suttonhigh.gdst.net



For times when...

You feel like it's time to try something new & experience a new take on life, Hallmark Care Homes is here for you!

Life within Banstead Manor, means building new friendships, exciting new experiences & moments to cherish.



My name is Oliver Nimmo. I am a qualified drone operator and carry out a range of services for companies and individuals: gutter inspections, damage inspections, building surveys, site surveys and more, all over the south East of England. I have been doing this for about a year now but have had an interest in drones and flown them for fun over the last few years. I really enjoy doing this and hope to expand further.

If you would like any more information, please let me know
01737360564
onimmo21@gmail.com

Residential care | Dementia care | Nursing care | Respite care

01737 747 096 | Banstead, SM7 1BS
hallmarkcarehomes.co.uk/bansteadmanor



May Fayre Attractions

Beer Tent	Bottle Tombola
Pimms Tent	Pizza's and Krispy Kremes
Prosecco Cart	Lucky Dip
Cake Stall	Jar Tombola
Grand Raffle	Digging for Treasure
Golden Ticket	and other similar games
Lucky Square/ 100 Square	

Food Court

Cripes its Crepes - Savoury and sweet crepes
 Butchers Block - Burgers
 Family Favourites - Candy Floss and Popcorn
 Vincenzo Bertolone - Icecream
 Gourmet Griddle - Wraps
 Supreme Cuisine - German Sausages

Stalls

Browse our selection of local artisan, hand crafted stalls and sample some of the best that our local producers have to offer. You will also find a number of Banstead community stalls as well as local schools and businesses.

4th Banstead Guides	Hook a Duck
4th Battalion Princess of Wales Royal Regiment	Jam Packed Preserves
7th Banstead Scouts	J's Cupcakes - Bakes and Cakes
Banstead Arts Festival Society	Judit Mathews - Illustrative Artist
Banstead Art Group	Kids Novelty Gift Bags
Banstead Cricket Club	Monstore Studio
Banstead History Research Group	Royal British Legion, Banstead
Banstead Junior School	Royal Alfred Seafarer Society
Banstead Village Residents Association	Samuels Artisan Bakery
Beacon Friends Association	Signature Care Homes, Banstead
Birchgrove Care Home, Banstead	Silver Petals
Catch a Penguin Game	SS Patisserie
Fabulous Fudge	The Handmade Picture Company
Funky Posh	The Horseshoe Community Preschool
Geraldine's Garden Bits	Vintage Games - Test Your Strength
Glitter Glam	
Hallmark Care Homes, Banstead	

Correct at time of going to print, further stalls will be confirmed via social media

May Fayre Food Court



Cripes It's Crepes
 The Butchers Block
 Gourmet Griddle
 Family Favourites
 Gourmet Griddle
 Supreme Cuisine



Cleanki/

AWARD-WINNING PEST CONTROL SERVICES



INVESTORS
IN PEOPLE

Gold
Until 2020



Let your pest be our problem

0800 056 5477



SEARCH: @cleankilluk

CLEANKILL.CO.UK



Are you looking to move home?

Or are you coming to the end of your current mortgage agreement and want to know what else is available?



At **Surrey and City Mortgages** we pride ourselves in being able to support families to find the very best mortgage and remortgage offers available for your circumstances.

With access to over 80 lenders, both high street and broker-only; thousands of mortgage products; and years of industry experience and knowledge; we are confident that your experience with us will be one that you will be pleased with.



Don't just take our word for it – take a look at our **90 five star reviews** on Google.

If you would like to discuss your remortgage needs, contact us today at:

M: 07470 222 413

E: Luke.mcdonagh@SurreyandCity.co.uk

W: www.SurreyandCitymortgages.co.uk



SURREY
& CITY
MORTGAGES



* Your home may be repossessed if you do not keep up repayments on your mortgage.

Poster Competition Winners 2023



Evie Cantwell
Warren Mead Infants



Eleanor Simms
Banstead Junior School

Poster Competition Runner up 2023



India Wythe
Banstead Infant School



Max Wythe
Aberdour

Design through to Print

we specialise in all things printed

Letterheads • Business Cards • Compliment Slips • Logos
Leaflets & Flyers • Brochures & Booklets • Posters • Adverts
Magazines • Forms and NCR Pads • Stickers and Labels
Banners • Wedding Stationery • Pop-up Stands • Signage



for that personal touch...



07932 624218

sales@lawton-pd.co.uk • www.lawton-pd.co.uk



Reigate & Banstead
BOROUGH COUNCIL
Banstead | Horley | Redhill | Reigate

The Reigate & Banstead Volunteer Awards 2022

Volunteer Team Award

The Banstead Village May Fayre Group

For dedication & commitment to voluntary service in the local community

Councillor Frank Kelly
Mayor of Reigate and Banstead
18th October 2022



Voluntary Action
Reigate & Banstead



INTRODUCING THE BFA AMAZON WISHLIST - A BRILLIANT NEW WAY FOR YOU TO SUPPORT ALL STUDENTS @TBS!

The BFA are often asked by our parents and friends:

'Is there something the school really needs?' Or 'my child is leaving and I would like to buy something to say thank you'.

Well now you can! To add to our ever popular suite of armchair options, we have now added the **BFA AMAZON WISHLIST**.

Scan the or code below to take you to the list. Sometimes it is the items that cost the least that make the biggest difference in school (glue sticks are a case in point!).



Add the item to your basket and select the gift registry address of the BFA.

Simple (and you'll make such a difference in school).
Thanks in advance.



ADULT SWIMMING LESSONS

Downsend School
(Leatherhead)
and Epsom College

3 WEEKS FREE*
*New adult swimmers

All standards including advanced length swimmers

01372 739600

colin@cbswimming.co.uk - www.colin-bull-swimming-lessons.co.uk

www.facebook.co.uk/cbswimming



Your local Boiler & Heating Company!

01737 552 746
07740 943 230
info@bansteadboilers.co.uk

Gas, Heating & Plumbing Services

Boiler Upgrades • System Upgrades
Unvented Hot Water • Mains Boost Water Cylinders
Under Floor Heating

Unique Screed Cutting UFH (*instead of overlay*)
Power Flushing • Water Tanks • Service & Repair
New Water Mains • General Plumbing

New Technology...Old Fashioned Service - Fantastic reviews on Checktrade!

www.bansteadboilers.co.uk



Are you a landlord or a leaseholder and unhappy with your current Agent?

We are a family run business established in 2009, located in Reigate. We are able to deliver all your block management needs. We cover the local and surrounding areas and deal with all aspects of block management.

Our services are designed to reflect leaseholders and the individual blocks needs. We operate in a different ways from other traditional Managing Agents, who often add property management services to their sales and lettings business.

Contact us on;

Sarah Walsh ☎ 01737847070 ✉ sarah.walsh@stwalsh.com
Sam Walsh ☎ 07973955882 ✉ sam.walsh@stwalsh.com

Ground Floor, 58 Castle Walk, Reigate, Surrey RH2 9PX

Registered No. OC342279 Registered Office: Ground Floor, 58 Castle Walk, Reigate RH2 9PX



May Fayre Parade

Starts 11.30am at United Reformed Church



All of you who participate in the parade or perform in the arena – thank you for sharing your talents with us. We are looking forward to seeing you.

1st Banstead Rainbows
3rd Banstead Scouts
4th Banstead Guides
4th Battalion The Princess of Wales's Royal Regiment
5th Banstead Brownies
808 Dance
All Saints Church
Banos Musical Theatre
Banstead Academy of Performing Arts
Banstead Classic Cars
Banstead Community Junior School
Banstead Cricket Club
Banstead Infants School
Banstead Manor Care Home Residents (TBC)
Banstead Prep School
Banstead Village Football Club
Banstead Village In Bloom
Banstead Village Residents Association
Beacon Friends Association
Beacon School
Beechholme Belles
Burghwood Montessori
Deputy Lord Lieutenant

Drewitt's Carriages and
May Queen Georgia May Trayfoot
Helyn Clack, Chair of Surrey County Council
Hidden Gems Theatre School
Jebb the Jester
Laird Academy
Luke Bennet - Surrey County Councillor
Nork Residents Association
May Queen Attendants
May Queen President
Mayor of Reigate and Banstead - Councillor Frank Kelly
O'Donnell School of Irish dancing
Orchard Montessori
Redhill Corps of Drums
Royal Alfred Seafarers Society
Royal British Legion, Banstead
Royal British Legion Youth Band, Surbiton
St Annes Catholic Church (TBC)
St Annes Catholic School
Signature Care Home Residents (TBC)
Show Choir
Sutton Sea Cadets
Woodmansterne Operatic and Dramatic Society

Arena Programme

12 Jebb The Jester
12.10 Speeches from the following
Vicar of All Saints
Deputy Lord Lieutenant
Mayor of Reigate and Banstead
Friends of the Beacon School
May Queen of Banstead, Georgia May Trayfoot
12.30 Poster Competition Winners
12.35 St Anne's Catholic School
12.55 Banstead Infants School
1.10 O'Donnell School of Irish Dance
1.30 Beacon School Dance Team
1.35 Banstead Academy of Performing Arts
1.55 BANOS
2.10 808 Dance
2.30 Laird Academy
2.50 Show Choir
3.10 Woodmansterne Operatic and Drama Society
3.30 Jebb The Jester
3.45 Show Choir
4 pm Grand Raffle Draw



correct at time of going to print



@BVMQG



Facebook



bansteadmayqueen



RALPH JAMES x LANCASTERS

Joining forces to give Banstead the edge, where local knowledge meets property passion.

A distinct approach, bespoke marketing, and a trusted team of agents.

Better. Together.

Banstead

01737 371 700
banstead@ralphjames.co.uk
25 High Street, SM7 2NE

ralphjames.co.uk



Musical Theatre

Dancing



Singing



Acting



Hidden Gems Theatre School

Learn new skills Build confidence Have fun

SIGN UP FOR A FREE TRIAL!

Wednesdays @ St Peters Church, Rectory Lane

Dancers and Singers (6 - 16) 4.15 - 6.15pm

Saturdays @ St Andrews Church, Coulsdon

Mini Gems (3 - 6) 9.40 - 10.30am

Juniors & Seniors (6 - 16) 10.30 - 12.30pm

INFO@HIDDENGEMSTHEATRESCHOOL.CO.UK
07749496565

TADWORTH
CHARITY
RECYCLING

Concerned about plastic waste.
Want to find out more?

If you use facebook then please search for **@tadworthterracycle**

A few items from an extensive list are biscuit wrappers, Pringle tubes, bread bags, toothpaste tubes and brushes, cheese wrappers, crisp packets and chocolate wrappers.

These and more can be recycled at Tadworth, Banstead, Dorking and Leatherhead, with ourselves and also we can put you in touch with those who might operate in your areas.

You can use a private message through the facebook page or send an email to **tadworthterracycle@gmail.com**

All the waste collected will be recycled and made into new products.
Money raised goes to the Alzheimers Society and small sums donated locally.

Be part of this adventure and help us collect!

 tadworthterracycle

 @TTerracycle



Learn more at www.terracycle.com



Member of the National Association of Jewellers

*Campbells of Banstead
Jewellers*



35 High Street
Banstead, Surrey
SM7 2NH
01737 359658

121 High Street
Epsom, Surrey
KT19 8DT
01372 723467

Birchgrove Banstead Banstead Place

Exceptional self-contained retirement apartments
with on-site 24hr Concierge, Brasserie, Orangery,
Drawing Room, Wellness Suite & more...



Who's first?

There is only one Banstead Place... and we are delighted to reintroduce you to her. She's getting ready for her big debut and being lovingly restored to her former splendour – as is only right and fitting for such a magnificent estate.



When she steps out, you'll discover 54 highly individual, one- and two-bedroom apartments – stylish beyond compare. Each self-contained apartment is unique, inside and out, and draws character from its history and surroundings.

Imagine living in such surroundings.

An estate rich with architectural landscape features you can enjoy including a pear orchard, arboretum and extensive grounds.

But you don't have to wait for this dance. Be first. Have unrivalled choice. Get the apartment you want... and put your own stamp on it.

**Early-bird
reservations
now open**

Curious to know more?

Get in touch with one of our retirement advisors:

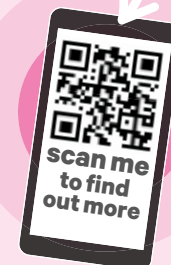
020 3929 5599

www.birchgrove.life/banstead

Meet the Birchgrove team at:



131 High St, Banstead, Surrey SM7 2NS



Shop Window Dressing 2022

Winners 2022

1st - QEF Charity Shop

2nd - Princess Alice Hospice

3rd - Truelove

Highly Commended - Cancer Research



Shop Window Dressing Competition 2023

Entrants 2023

Correct at time of going to print, but there are usually many more shops joining in the fun...

**Banstead Kitchen Studios • Butchers Block • Cats Protection League
Christies Estate Agents • Fadi Tailoring • Fluke Ladies • Honeysuckle
Lemon Tree • Mad Lilies • Michael Everett Estate Agents • Oxfam
Pearl Chemist • Princess Alice Hospice • QEF Charity Shop
The Children's Trust • The Natural Way • The Personal Agent • Trueloves
Village Barbers • Watermans Dry Cleaners**

BANSTEAD DENTAL CARE

FAMILY DENTAL PRACTICE & IMPLANT CENTRE



Comprehensive Dental Services

All of our treatments and services are provided in a comfortable, spa-like clinic, designed according to high-quality standards.



Emergency Dental Care

Do not hesitate to seek help. Urgent dental care is provided usually the same day.



General Dental Care

General dentistry is for patients of all ages offering complete, comprehensive dental health care.



Dental Implants

We work toward creating youthful smiles for patients whose natural teeth require replacement.



Cosmetic Dentistry

A beautiful smile contributes to a better mood and boosts self-esteem.



Smile with confidence!





BANSTEAD KITCHEN STUDIO

Why Choose BKS?

Whatever space you have, whether your budget is large or small, we have a solution for every project.

Our fabulous inhouse designer has expertise in space planning and specialises in maximising the potential of any room. BKS will be with you every step of the way!



STYLE | EXCLUSIVITY | DESIGN | LUXURY



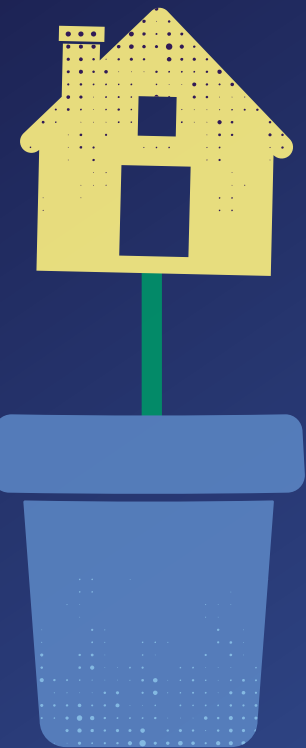
Let us Design your Dream Kitchen!

Planning a new kitchen is a very exciting time, and we would love to be apart of your journey.

Contact us on 01737 370708
info@bansteadkitchenstudio.com
Follow us on Instagram
[@bansteadkitchenstudio](https://www.instagram.com/bansteadkitchenstudio)



HELPING PEOPLE PUT DOWN ROOTS.



Winkworth Banstead
are proud to support the
Banstead May Fayre.

Winkworth Banstead
01737 362 362

100 High Street, Banstead, Surrey, SM7 2NN
banstead@winkworth.co.uk

Winkworth

See things differently.



Spot yourself in the crowd at last year's May Queen - come with the programme to Radio Marsden on the stage at this year's event on Saturday 6th May to claim one of three prizes.





BANFEST IS BACK!

15TH, 16TH AND 17TH SEPTMEBER
2023



SCAN THE QR CODE FOR MORE INFO!

Banstead Cricket Club



A thriving sports club in the heart of
Banstead Village.

New members - playing and social -
always welcome!



Scan the QR code for more info!

Prizes for The Grand Raffle and The £10 Golden Ticket Game

We have been given a fantastic variety of raffle prizes which we have collected together to make **15 great Hampers**, and if you are a winner and you are present for the Grand Raffle Draw at approximately 4pm, you can choose which hamper you would like.

Family Day Out Hamper

The Ladies' Hamper

The Gentlemen's Hamper

The Banstead Home Hamper

The Children's Party Hamper

The His and Hers Hamper

The Men's Day Out Hamper

The Pamper Hamper

The Teen Hamper

The Wine Lovers' Hamper

The Grocers' Hamper

The Cook Hamper
Donated by 

Hamper
Donated by 

Hamper
Donated by 

and other Hampers

The May Fayre group would like to thank the following companies for their kind gifts and donations for our Grand Raffle and Golden Ticket Raffle:

Art of Living, Banstead	Gatwick Footgolf	and Story Centre
Banstead Fruiterers	Godstone Farm	Quattro Barbers, Banstead
Banstead Kitchen Studios	Great Cockrow Railway	Sammie's Studio, Banstead
Banstead Studios	Honeysuckle, Banstead	Santa Pod Raceway
Banstead Village Clinic	Interior Transformation, Banstead	Sevenoaks, Banstead
Banstead Vintners	Kala Off License, Banstead	Specsavers, Banstead
Bekonscott Railways	Kapre Lounge and Barbers	Si Belle, Banstead
Blackdown Ridge	Karen Walsh	Such Hair, Banstead
Bocketts Farm	King of Cotton, Banstead	Surrey Windows, Banstead
Boots the Chemist, Banstead	Lavender Kitchen, Banstead	St Raphael's Charity Shop
Café Chai, Banstead	Lawton Print Design, Banstead	Tadworth Sports Centre
Cafe Italia, Banstead	Lingfield Park Race Course	The Butchers Block
Campbells Jewellers, Banstead	London Museum of Water and Steam	The Front Room, Banstead
Charlie Brown Hairdressers, Banstead	Lorimers, Banstead	The Lemon Tree, Banstead
Colin Bull Swimming	Luigi's Café, Banstead	The Natural Way, Banstead
Cook, Banstead	Mad Lilies, Banstead	The Personal Agent, Banstead
D'Braz, Banstead	Magnolia, Banstead	The Village Barber, Banstead
Dorking Halls	Michael Everett Estate Agents, Banstead	Victoria Chemist, Banstead
Drews Dry Cleaning, Banstead	MLP Wealth, Banstead	Village Café and Bistro, Banstead
Drusilla's Park	Mr Snob, Banstead	Wacky Warehouse
Edibles, Banstead	MS Kalsi, Banstead	Watermans Dry Cleaners, Banstead
Fishers Adventure Farm Park	Ora, Banstead	Watts Gallery Artist Village
Fadi Tailoring, Banstead	Oxfam, Banstead	White Spider Climbing
Fego, Banstead	Pearl Chemist, Banstead	William Harlow Estate Agents, Banstead
Fishwala, Banstead	Pizza Express, Banstead	Woodward's, Banstead
Flame Grill, Banstead	QEF Charity shop, Banstead	Zizzi, Banstead
Fluke, Banstead	Roald Dahl Museum	
Gatton Park		

Correct at time of going to print. Thank you so much to any businesses who have donated a prize after this point.

Ciao Italia

RISTORANTE ITALIANO



Authentic Italian Cuisine

WEEKDAY SET MENU FROM **£17.95**
OPEN FOR SUNDAY LUNCH **£26.95**

01737 362 569

45 HIGH STREET BANSTEAD SM7 2NH
www.ciaoitalia.co.uk

Laird Academy



The renowned and highly regarded Laird Academy, under the personal direction of its Principal Deirdre Laird, offers classes in all disciplines of the RAD Syllabus - Ballet, Pointe-work and Contemporary. The Academy's exam results record is outstanding with over 100 students gaining distinctions in recent RAD and ISTD examinations with the option of senior students being taught up to RAD teaching certificate level and coaching for entry into full-time dance college.



WEEKEND MUSICAL THEATRE CLASSES FROM 3 YEARS

FREE TRIAL CLASSES AVAILABLE ON REQUEST

Classes held in Banstead, Tadworth & Kingswood
Contact: Miss Deirdre on 07816 008969 / 01737 831138

www.lairdacademy.co.uk

MR SNOB



Mr Snob

22 High Street, Banstead, SM7 2LJ

01737 355465

Shoe Repairs

Leather & Rubber Soles Stitched on,
Coloured Mirror Soles Perfect for all high end designer shoes,
Heels, Zip repairs and replaced

Key Cutting

Household keys, Car Keys and Dimple Cut Keys
Such as Ultion, Mul-T-Lock & Yale Magnums

Watches


Batteries, Straps and
Link Removal

On Site Engraving

Yearly Trophies, Glass Trophies,
Champagne Bottles and Flutes,
Tankards, Glasses, Hip Flasks,
Zippos, Sporting Trophies and Awards
Available in-store or customers own



You don't have to be the *Queen*
to feel like one

CHARLIEBROWN 



REIGATE 01737 240 176

BANSTEAD 01737 355 462

www.charliebrownhair.co.uk



— CURRENTLY FOR SALE —



2023 LAMBORGHINI HURACAN TECNICA
Grigio Telesto with Nero Ade & Arancio
Leonis Alcantara
36 MILES £284,950



2015 FERRARI LAFERRARI
Canna Di Fucile with Nero Leather & Giallo
Piping
1,632 £POA



2014 BUGATTI VEYRON VITESSE
Exposed Carbon Fibre & Tiffany Green
with Tiffany Leather
355 MILES £POA



2014 (64) FERRARI 458 SPECIALE
Rosso F1 2007 with Nero Alcantara &
Rosso 3D Fabric
661 MILES £425,000



2020 LAMBORGHINI AVENTADOR LP 770-4 SVJ
Nero Cosmos Alcantara & Verde Fauns
Leather
3,730 MILES £429,950



2006 MERCEDES-BENZ SLR MCLAREN 722
Crystal Galaxite Black with Black &
Anthracite
10,780 MILES £650,000



2017 ASTON MARTIN VANQUISH ZAGATO
Ming Blue with Ivory & Aurora Blue
Leather
172 MILES £374,950



2011 PORSCHE 911 (997) GT3 RS 4.0
Carrara White with Black Leather & Red
Alcantara
4,585 MILES £445,000



2022 ASTON MARTIN V12 VANTAGE
Lightning Silver with Onyx Black Leather
& Alcantara
45 MILES £334,950

— OVER 50 CARS IN STOCK —

STOCK REQUIRED - CONTACT US TODAY FOR A VALUATION

www.romansinternational.com

Brighton Road (A217), Banstead, Surrey, SM7 1AT



Kriek & Gibson Veterinary Surgery

Kriek and Gibson Veterinary Surgery is a local, family run practice treating pets in Banstead and surrounding areas.

Our services include: ● Preventative Health Care for all life stages
● Dental care ● Cat friendly service ● Behavioural support
● Diet and weight management ● Travelling pets
● Pain management ● Keyhole surgery

38 Brighton Road Banstead,
Surrey SM7 1BT

01737 360468

info@kriekandgibsonvets.com

OPEN 7 DAYS A WEEK



Congratulations to the
**Banstead Village
May Queen
2023**

www.kriekandgibsonvets.com

**Affordable &
Competitive
Prices**

The Village Tailors



Professional Quality & Satisfaction Guaranteed

Tadworth

Banstead



Mon - Fri: 9.30 - 1.30
Phone: 01737 338800
info@the-village-tailors.co.uk

Mon - Sat: 9.30 - 5.00
Phone: 01737 338800
info@the-village-tailors.co.uk

- Zips
- Leather
- Curtains
- Shortening
- Darns and Tears
- Sleeves
- Re-Lining
- Fittings

Appointment preferred

**Suit Prices
from £395**

**Made to
Measure**



Fadi

Leather Repair Alterations Restorations

Walton on the Hill



Mon - Fri: 8.30 - 6.00
Sat: 8.30 - 3.00
Phone: 01737 814140
info@leather-repair-alterations.co.uk



Grace

www.faditailoring.co.uk

**20% OFF Voucher for New and Existing Customers
Valid until 3rd January 2024 one voucher per order.**